

Table 10. U.S. per capita use of sweet potatoes, 1970-2002* (in pounds, farm-weight)

1970	5.4	1980	4.4	1990	4.4	2000	4.2
1971	4.9	1981	4.7	1991	3.9	2001	4.4
1972	4.9	1982	5.5	1992	4.1	2002	3.7
1973	5.0	1983	4.6	1993	3.7		
1974	4.9	1984	4.9	1994	4.5		
1975	5.4	1985	5.4	1995	4.2		
1976	5.4	1986	4.4	1996	4.3		
1977	4.7	1987	4.4	1997	4.3		
1978	4.9	1988	4.1	1998	3.8		
1979	5.1	1989	3.9	1999	3.7		

Source: Economic Research Service, USDA. * 2002 data is ERS forecast

Figure 10. U.S. per capita use of sweet potatoes, 1970-2002

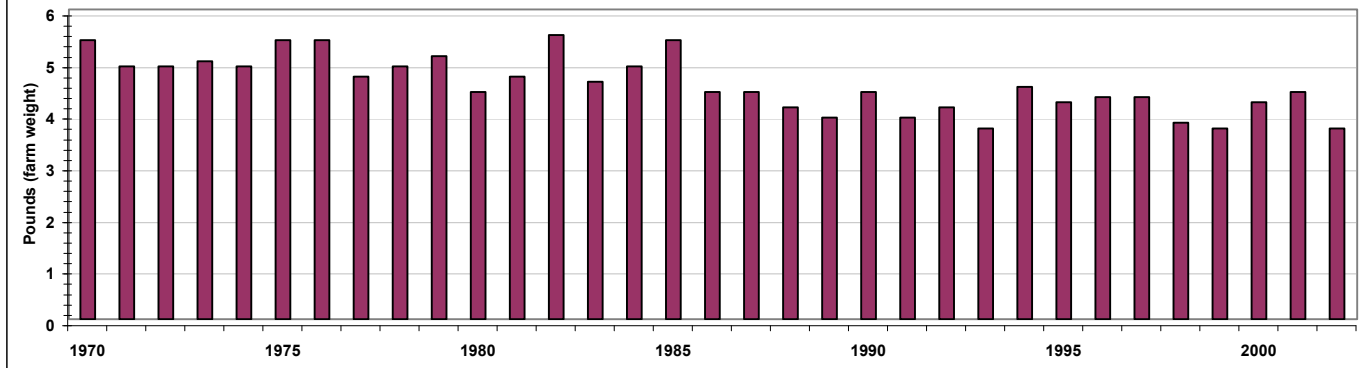


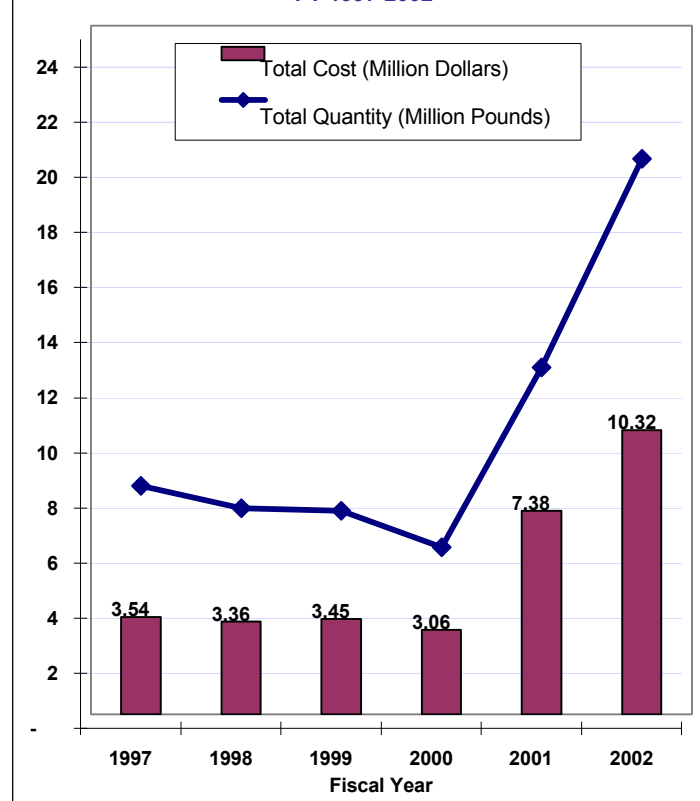
Table 11. USDA sweet potato purchases, Fiscal Years 1997-2003

Year	Commodity Type	All Fund Sources		
		Total Cost (\$)	Total Pounds	Total Cases
FY 1997	Canned	3,120,645	7,420,394	--
	Frozen	417,292	871,200	--
	Total	3,537,937	8,291,594	--
FY 1998	Canned	3,357,840	7,469,922	195,642
	Frozen	--	--	--
	Total	3,357,840	7,469,922	195,642
FY 1999	Canned	3,131,046	6,765,820	187,878
	Frozen	323,835	633,598	21,120
	Total	3,454,881	7,399,418	208,998
FY 2000	Canned	2,875,587	5,712,620	176,232
	Frozen	186,674	356,400	11,880
	Total	3,062,261	6,069,020	188,112
FY 2001	Canned	7,266,110	12,345,784	464,430
	Frozen	113,348	237,600	7,920
	Total	7,379,458	12,583,384	472,350
FY 2002	Canned	8,014,950	13,282,047	514,069
	Frozen	409,516	712,800	23,760
	Fresh	1,898,426	6,164,000	9,970
Total	10,322,892	20,158,847	547,799	
FY 2003*	Canned	509,123	757,350	33,660
	Frozen	--	--	--
	Fresh	--	--	--
Total	509,123	757,350	33,660	

* FY 2003 through March 2003

Source: Economic Analysis and Program Planning Branch, FV, AMS

Figure 11. USDA sweet potato purchases, FY 1997-2002



Excerpted from the *Sweet Potato Statistical Yearbook 2003* of the The United States Sweet Potato Council, Inc.